



QUALIFIED ADU
PLANS INSIDE

FAIRPOINT

Home Collection

FairpointCollection.com

FAIRPOINT FLOOR PLANS

Have it Made[®] ADU Qualified Plans

An Accessory Dwelling Unit (ADU) is a secondary structure to a primary residence, that has complete living facilities for one or more persons. Recent California law changes have reduced impact fees and streamlined approval processes, making the development of ADU's easier than ever before. ADU's range in size from 400 sq. ft. up to 1,200 sq. ft. and can serve as a home for:

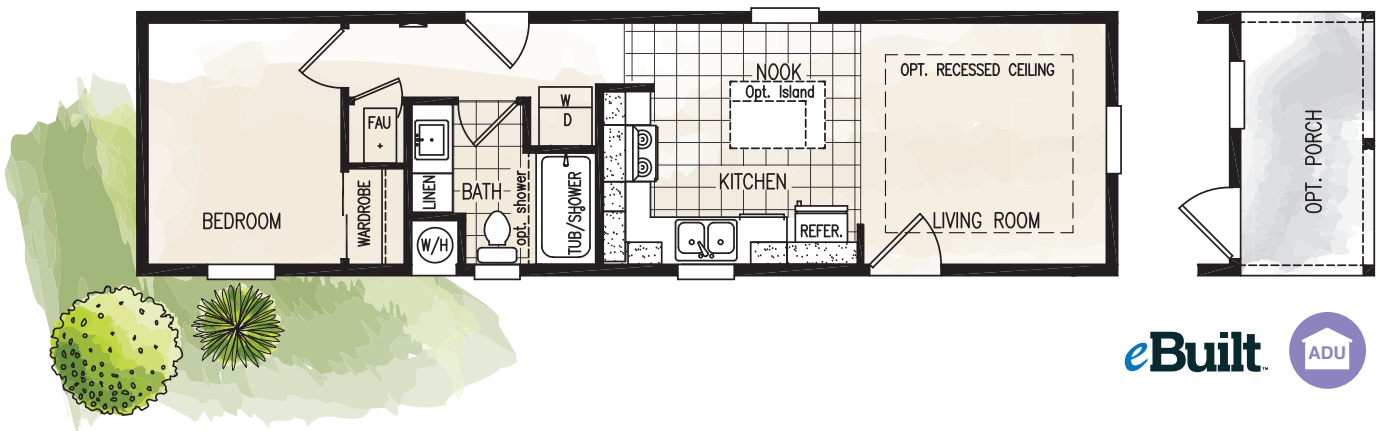


- Earning Rental Income
- Elderly Parent or Young Adult
- Private Work Space

Plans marked with the symbol above qualify as an ADU in California. Contact your local retailer for more information related to ADU's.

Model 12441B

1 Bedroom • 1 Bath • 520 to 712 Square Feet • 11'-10" (13'-6" and 14'-10" options) x 44' (48' option)



FAIRPOINT FLOOR PLANS

Model 14482C

2 Bedrooms • 1 Bath • 648 to 830 Square Feet • 13'-6" (14'-10" option) x 48' (52' and 56' option)



Model 14522D

2 Bedrooms • 2 Baths • 702 to 830 Square Feet • 13'-6" (14'-10" option) x 52' (56' option)



FAIRPOINT FLOOR PLANS

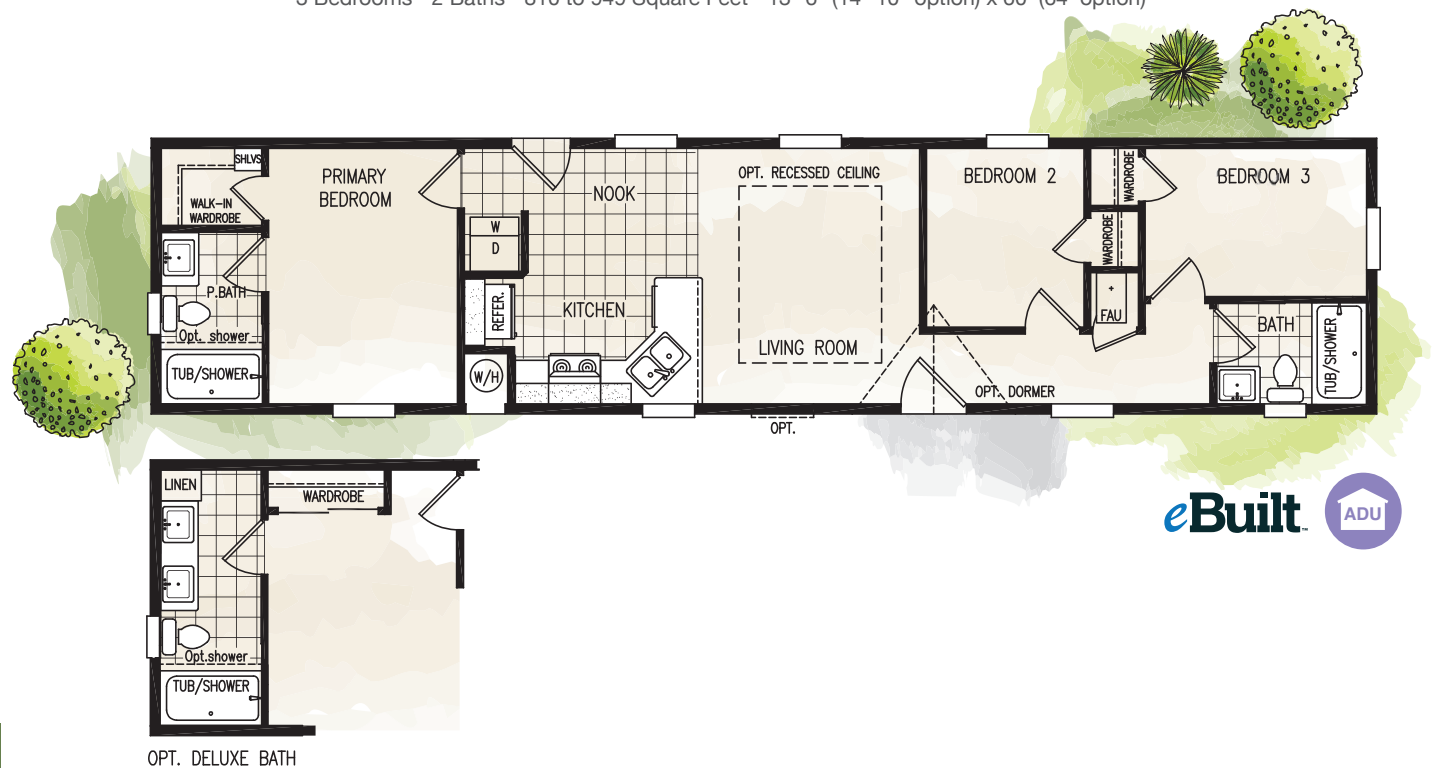
Model 14602A

2 Bedrooms • 2 Baths • 810 to 949 Square Feet • 13'-6" (14'-10" option) x 60' (64' option)



Model 14603B

3 Bedrooms • 2 Baths • 810 to 949 Square Feet • 13'-6" (14'-10" option) x 60' (64' option)



FAIRPOINT FLOOR PLANS

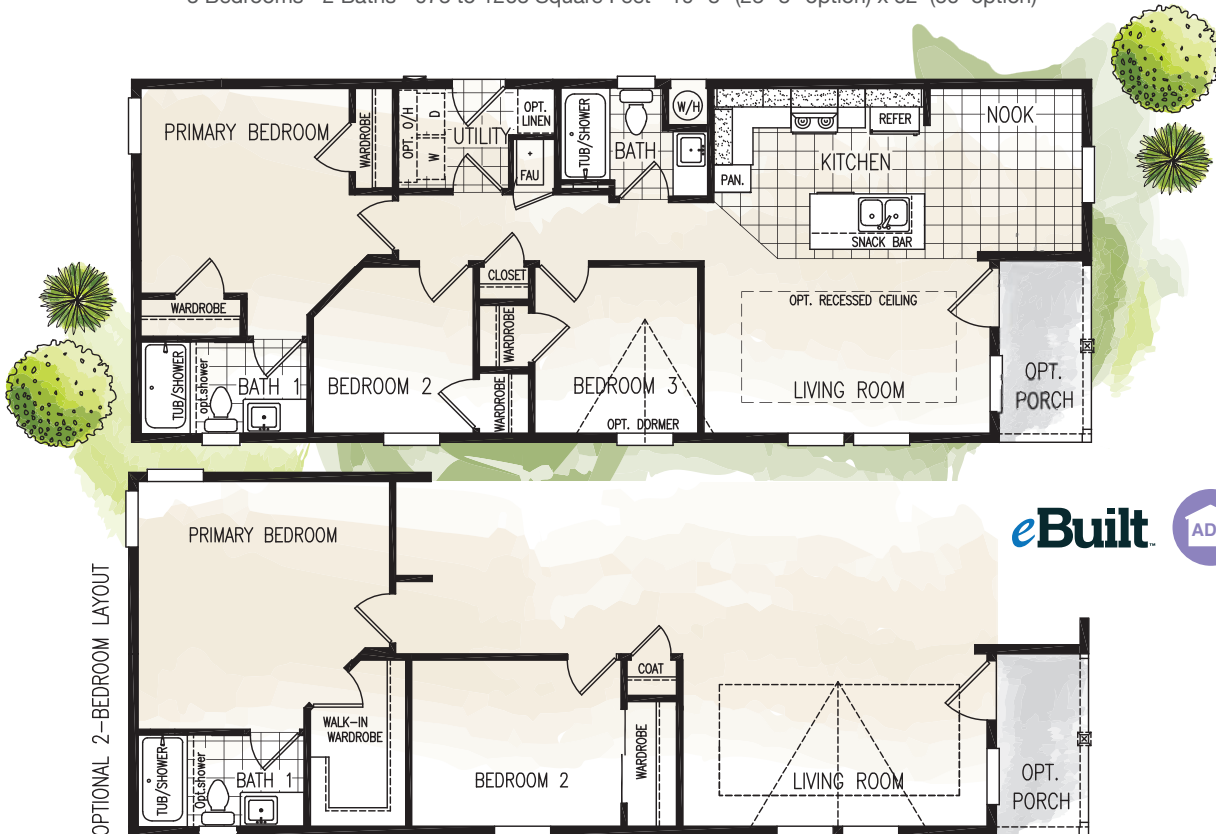
Model 20382B

2 Bedrooms • 2 Baths • 747 to 994 Square Feet • 19'-8" (23'-8" option) x 38' (42' option)

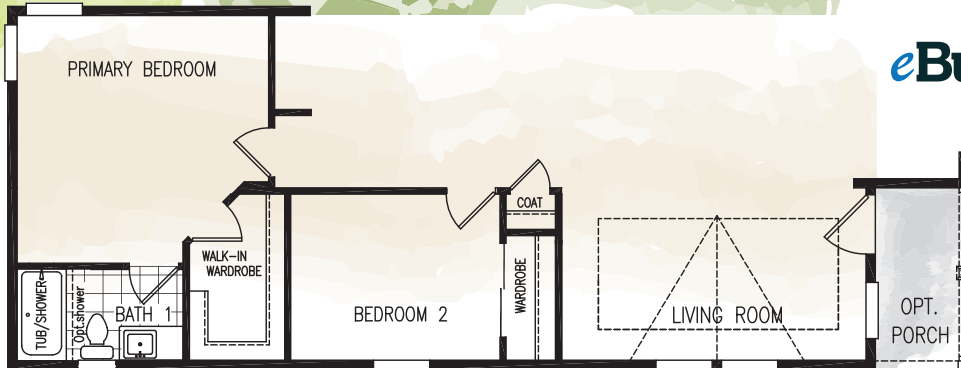


Model 20523B

3 Bedrooms • 2 Baths • 973 to 1263 Square Feet • 19'-8" (23'-8" option) x 52' (56' option)



OPTIONAL 2-BEDROOM LAYOUT





Homes so energy
efficient you can save
40-50%
on annual utility costs

Your Clayton *eBuilt*™ Home

Clayton *eBuilt*™ homes are built to the US Department of Energy's ZERO ENERGY READY HOME™ manufactured home standards. *eBuilt*™ homes consume less energy, which can reduce your annual utility expenses by 40-50%. That adds up to substantial savings for you each year!

- Solar - ready
- SmartComfort® by Carrier gas furnace
- Rheem® hybrid heat pump water heater
- Argon gas low-E windows
- ecobee® smart thermostat
- ENERGY STAR® Frigidaire® appliances
- Pfister® bathroom fixtures
- LED lighting
- Insulated doors
- Additional home insulation
- Sealed duct system
- Whole house ventilation system

FAIRPOINT FLOOR PLANS

Model 24322B

2 Bedrooms • 1 Bath • 757 to 972 Square Feet (749 Sq. Ft. with recessed entry option) • 23'-8" (27' option) x 32' (36' option)



Model 24403A

3 Bedrooms • 2 Baths • 947 to 1188 Square Feet • 23'-8" (27' option) x 40' (44' option)



FAIRPOINT FLOOR PLANS

Model 24463A

3 Bedrooms • 2 Baths • 1065 to 1323 Square Feet • 23'-8" (27' option) x 46' (50' option)



OPT. FRONT ENDWALL PORCH ENTRY

Model 24463B

3 Bedrooms • 2 Baths • 1088 to 1350 Square Feet • 23'-8" (27' option) x 46' (50' option)



OPTIONAL 2-BEDROOM LAYOUT



FAIRPOINT FLOOR PLANS

Model 24523H

3 Bedrooms • 2 Baths • 1199 to 1476 Square Feet • 23'-8" (27' option) x 52' (56' option)



eBuilt



Model 24523K

3 Bedrooms • 2 Baths • 1199 to 1476 Square Feet • 23'-8" (27' option) x 52' (56' option)



eBuilt



FAIRPOINT FLOOR PLANS

Model 24563D

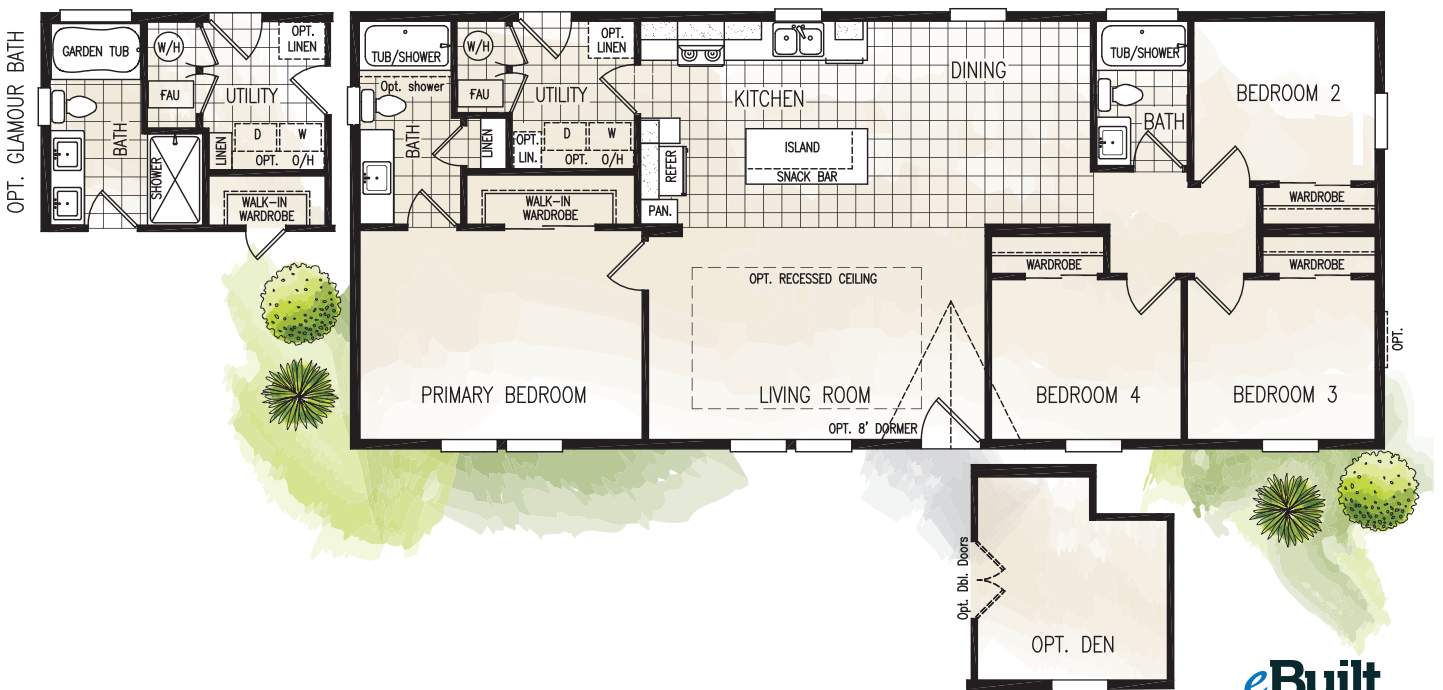
3 Bedrooms • 2 Baths • 1266 to 1552 Square Feet • 23'-8" (27' option) x 56' (60' option)



eBuilt

Model 24564A

4 Bedrooms • 2 Baths • 1325 to 1620 Square Feet • 23'-8" (27' option) x 56' (60' option)



eBuilt

FAIRPOINT FLOOR PLANS

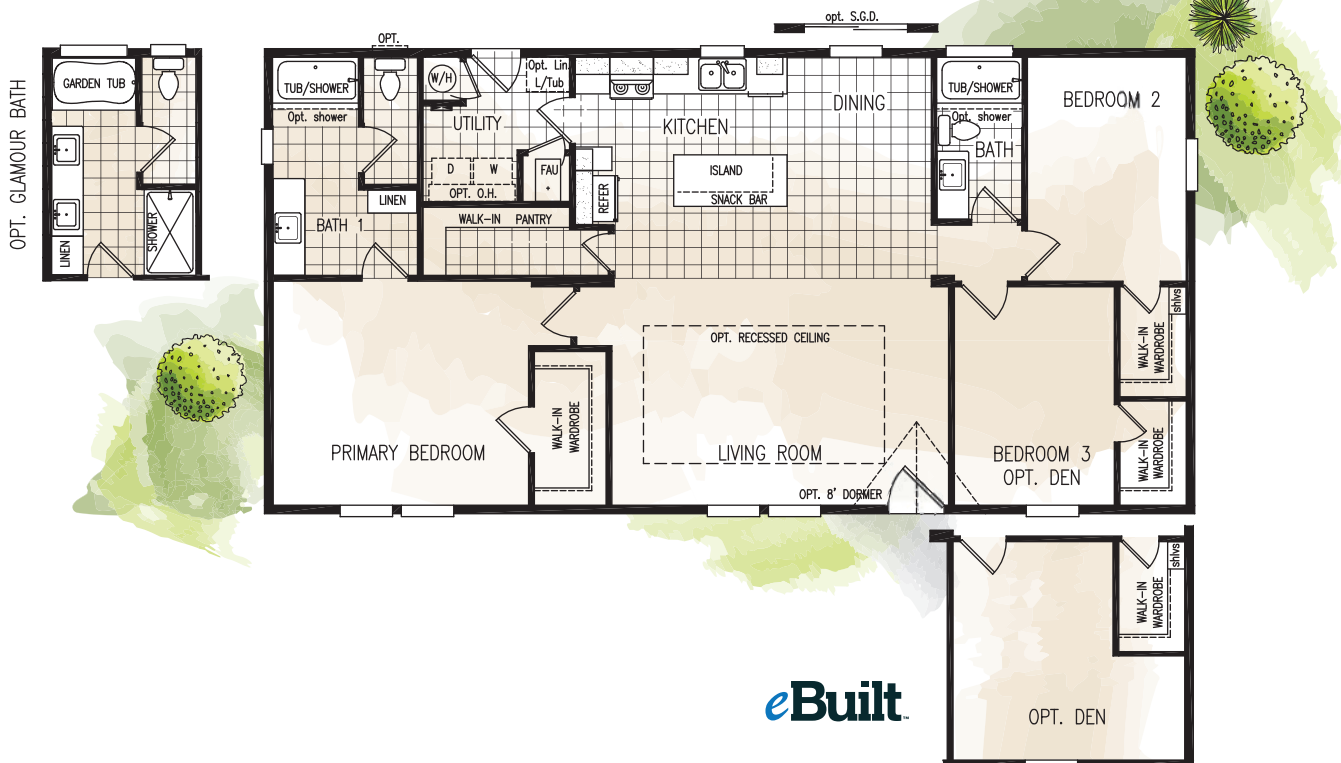
Model 24623A

3 Bedrooms • 2 Baths • 1467 to 1782 Square Feet • 23'-8" (27' option) x 62' (66' option)



Model 27543F

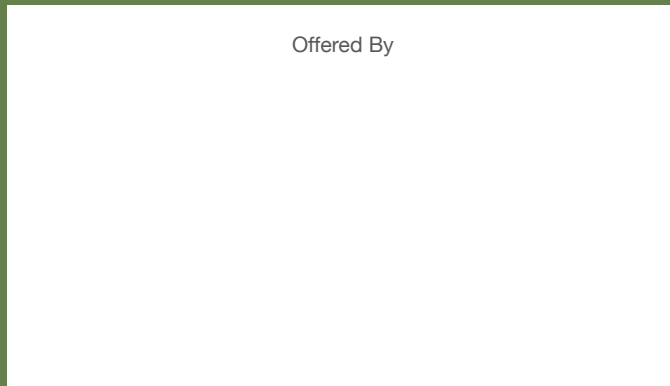
3 Bedrooms • 2 Baths • 1458 to 1566 Square Feet • 27' x 54' (58' option)



eBuilt

The Clayton Built Standard.

When you look at a Clayton Built® home, you will see it's complete with appliances and materials from dependable brands. We partner with some of the world's leading homebuilding brands to ensure your home is equipped with safe, sustainable, long-lasting and innovative products.



Because our company has a continuous product update process, specifications, floor plan lay-out and dimensions shown on this literature are subject to change without notice or obligations. Construction and design specifications as well as features presented are conceptual, therefore should not be used as actual construction data, and may not be offered in all series or models. Our Retailer will provide accurate, up-to-date information on available options and specifications for your home.

All Fairpoint elevations and floor plans are copyrighted.
© 2023 Sacramento Home Building Facility